



No. 17

Greystone Crossing: Eva-tech Decorative Balusters & Lifespan Beams Installation

Rustenburg, South Africa, March 2023

LIFESPAN
COMPOSITE ARCHITECTURAL BEAMS

www.eva-last.com

EVA-LAST[®]
INSPIRED BY NATURE, DESIGNED FOR LIFE.



PROJECT DETAILS

Project Name

Greystone Crossing

Project Type

Commercial Shopping Centre

Description

Cladding, screening and decking for benches

Date of Installation

March 2023

Architect

Pieter Minnaar, Theunissen Jankowitz
Architects

General Contractor

Stefan Nienabuhr

Project Location

Rustenburg, South Africa

Product Used

Eva-tech Decorative Balusters
& Lifespan Beams



PROJECT OVERVIEW

Convenience at its best at Greystone Crossing

Greystone Crossing is Rustenburg's premier shopping centre serving wildlife enthusiasts, mining magnates and a kaleidoscope of patrons from in and around South Africa that come to enjoy the Northwest Province's warm weather and rich mineral wealth. Situated just off the N4 highway in Azalea Park and billed as "Convenience Shopping at its best", Greystone Crossing offers patrons a broad selection of retail outlets including anchor tenants like Pick 'n Pay, Dischem and Westpack whilst also housing a number of specialty stores including Hi-Q Tyres, a Suzuki car dealership, retail banking facilities, and a coffee shop.

The mall's dated façade was due for an upgrade to transform it into a state-of-the-art shopping experience. Lynx Real Estate redevelopment specifications aimed to create a welcoming, personalised ambience while incorporating low maintenance, modern architectural materials.



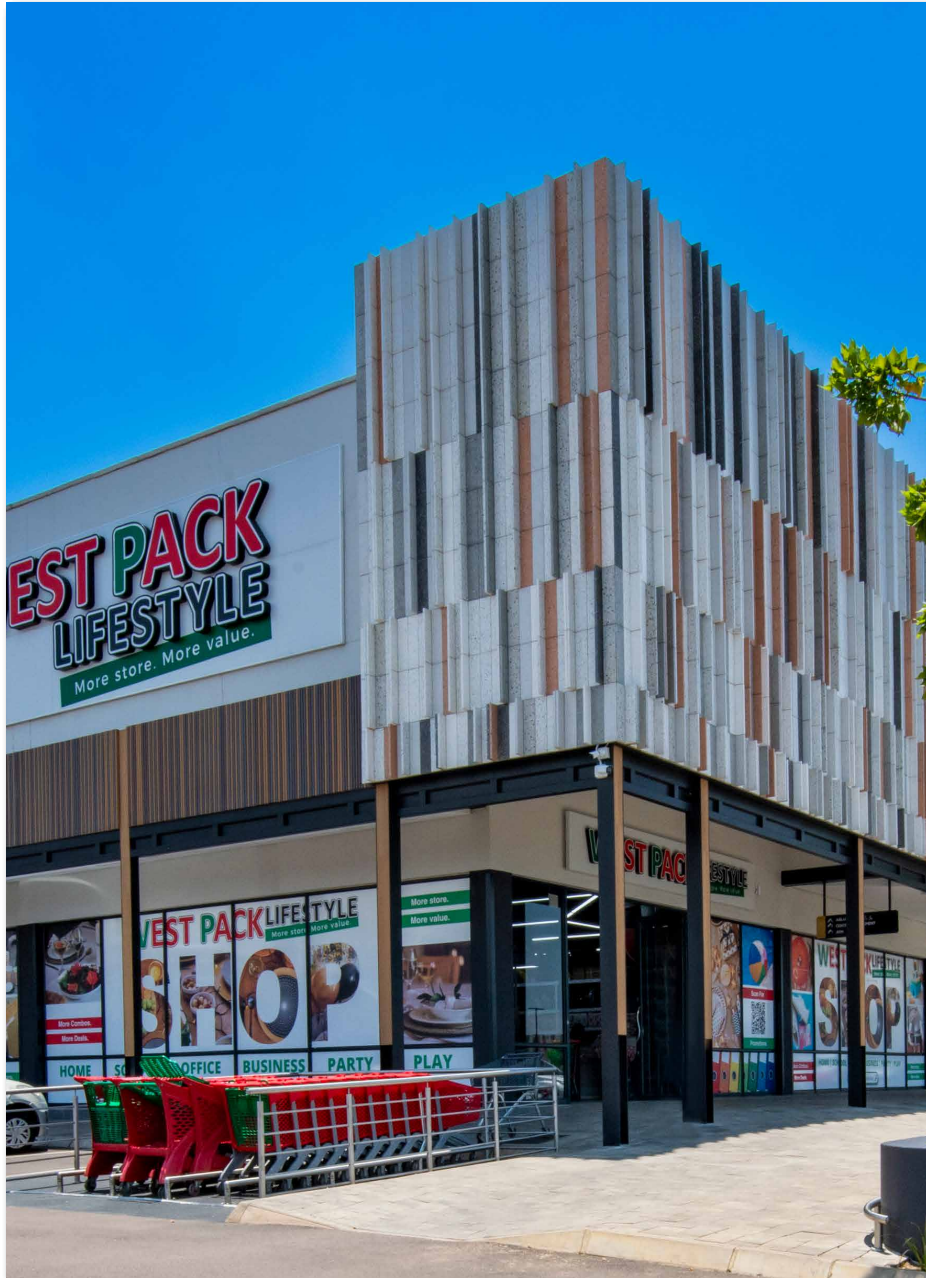
THE EASY CHOICE

Dust, dirt, and harsh African sunshine were a key consideration for Thomas Kriel, lead designer from Theunissen Jankowitz Architects (TJA) when selecting materials for the Greystone Crossing redevelopment.

In line with contemporary building trends and materials, Kriel made the easy choice opting to combine durable, hardwearing natural stone tiles with engineered wood-look bamboo composites to create fashionable-yet-functional architectural structures.

The grainy surface of the “Terrazzo” tiles, coupled with the timber tones and textures of the versatile Eva-tech bamboo composites effectively disguise any inevitable dust or dirt. Eva-Last’s convenient composite profiles – available in various lengths and shapes – were creatively combined to design decorative, functional details for the entrance, walkway canopies and seating.

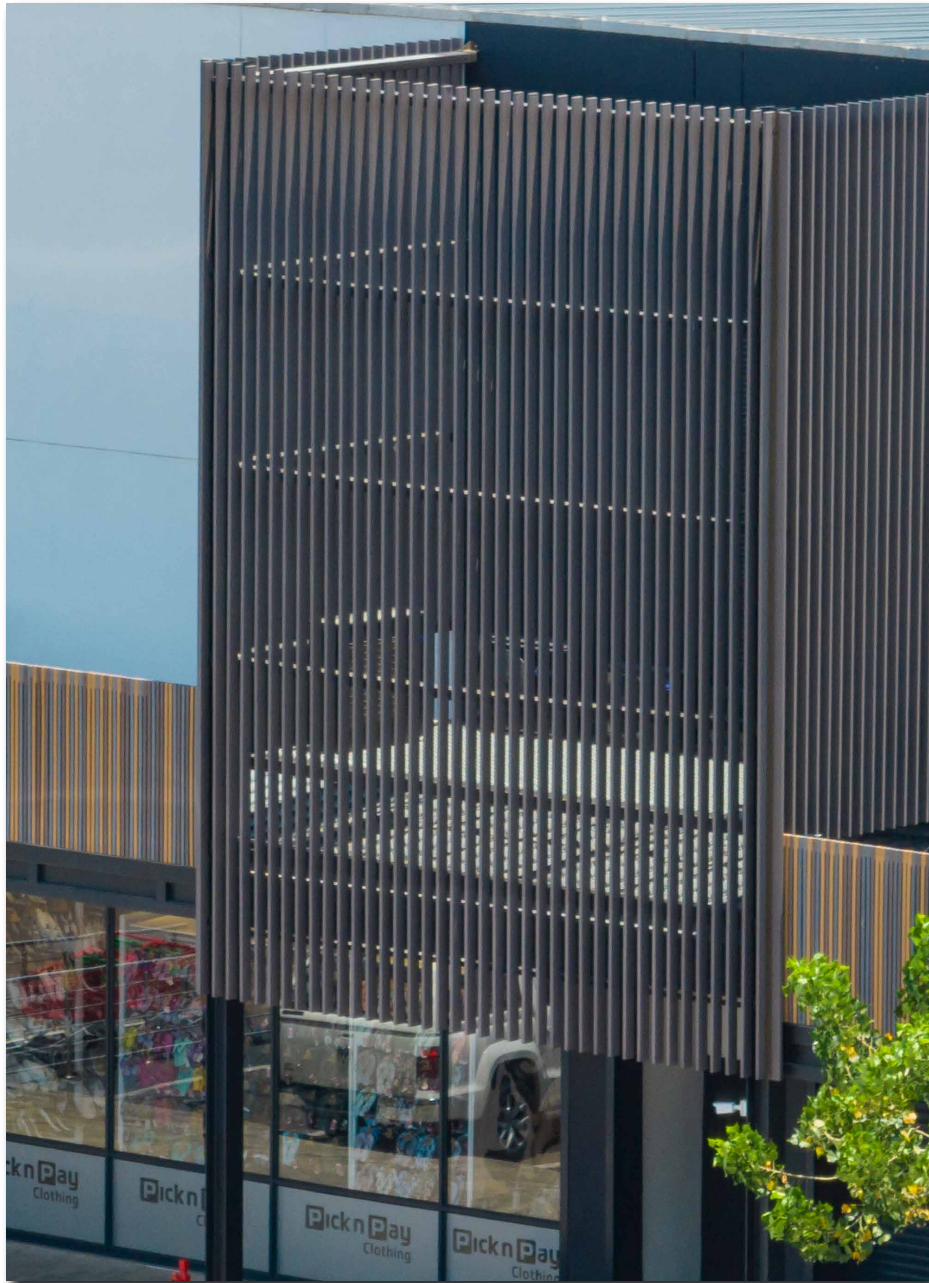
Decorative screens and decking from Eva-Last gave the building a new look without the need for major structural alterations. Functional spaces were created, unsightly aspects were concealed and feature aspects such as the entrance with its gorgeous, natural aesthetic, were accentuated.



Lifespan architectural beams, with the UV-resistant Eva-tech finish, in the subtle Savanna colour, added an organic, warm, and welcoming ambience to the mall's entrance and walls, simultaneously providing much-needed shade from the sun. Their protective exterior coating echoes the natural shades of the environment and additionally provides a scratch, fade and insect resistant surface that withstands the climate whilst maintaining their appearance.

Lightweight Lifespan architectural beams and Eva-tech balusters in the natural, earthy tones of Rusteak, Savannah and Rusteak were installed vertically overhead, forming a trendy slatted façade that offers both a stunning finish whilst ensuring easy installation of signage. Both Lifespan beams and Balusters were easily installed overhead for a safe and long-lasting finish that is highly durable and low maintenance.

In addition to Lifespan and Eva-tech balusters, Eva-Tech I-series deck boards were used to create resilient and splinter-proof seating around the mall. The light dual tone wood look Savannah shade was selected as it will not retain heat from the sun allowing seating to remain cool to the touch while offering a weather resistant, easy to clean, low-maintenance alternative to timber benches!



KEY INFLUENCER QUOTE

'The contrast between the Terrazzo tiles and warm wood aesthetic of the Eva-tech bamboo composites provides a new "skin" for the centre, creating an upmarket, quality refurbishment that is both beautiful and convenient,' concluded Kriel.



SUMMARY

The Greystone Crossing Shopping Centre's elegant new refurbishment was achieved by incorporating a natural wood-look aesthetic using Eva-Last's modern bamboo composite materials for convenience at its best. The bamboo composite materials selected guarantee the mall's attractive new appearance will remain for years to come.



ABOUT US

Eva-Last is a globally reputable brand that utilises a solution driven business model to create innovative, sustainable building materials and systems that add value to customers' lives. At the heart of Eva-Last is a team of highly capable, creative specialists united by a passion to promote environmental consciousness through eco-friendly building products and operations. By embracing low environmental impact manufacturing and cutting-edge composite technology, Eva-Last is revolutionising how building can be done. We design and deliver beautiful, long-lasting green alternatives that make our customers' lives easier, healthier, and just plain better.





LIFESPAN
COMPOSITE ARCHITECTURAL BEAMS

www.eva-last.com

EVA-LAST[®]
INSPIRED BY NATURE, DESIGNED FOR LIFE.